

QAInspect

Security Throughout the Application Lifecycle

For Mercury Quality Center™ or TestDirector® ■ QuickTest Professional™ or WinRunner™ ■ Business Process Testing™



SPI Dynamics' QAInspect products enable QA professionals to incorporate fully automated Web application security testing into the overall test management process without the need for specialized security knowledge and without the risk of slowing aggressive product release schedules. Now, Mercury users can conduct and manage both functional testing and security testing from a single platform.

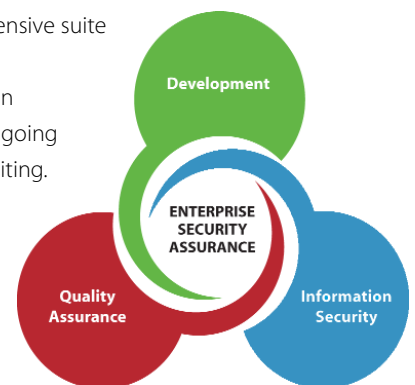
Standardizing Security as part of the Testing Process

With more than one million new Web applications being launched each month and successful hacker attacks in the news each week, application security is no longer an afterthought. Organizations now realize that security must be a priority during development. With an increased focus on application security, security and operations professionals are identifying security vulnerabilities in production Web applications. These vulnerabilities are usually traced to defects in the source code. Once vulnerabilities are discovered and traced to source code, security and operations professionals assign these defects back to development for remediation.

As a result, development and quality assurance organizations are learning that Web application security vulnerabilities must be treated like any other software defect. QA professionals know they can save time and money by identifying these security defects early in the software lifecycle-long before Web applications are deployed in production environments. However, most quality assurance professionals are not security experts and are looking for tools to help them find and fix security defects within their existing process and tools.

A Lifecycle Approach

SPI Dynamics delivers a comprehensive suite of products and services that support the entire Web application lifecycle, from development to ongoing operations management and auditing. These security products identify vulnerabilities early in the software lifecycle and help ensure that no new vulnerabilities are introduced throughout the life of the application. These products are designed to foster collaboration among developers, security professionals, and quality assurance individuals. Trustworthy software becomes possible only when security becomes a standard requirement in the entire development process.



Start Secure. Stay Secure.™

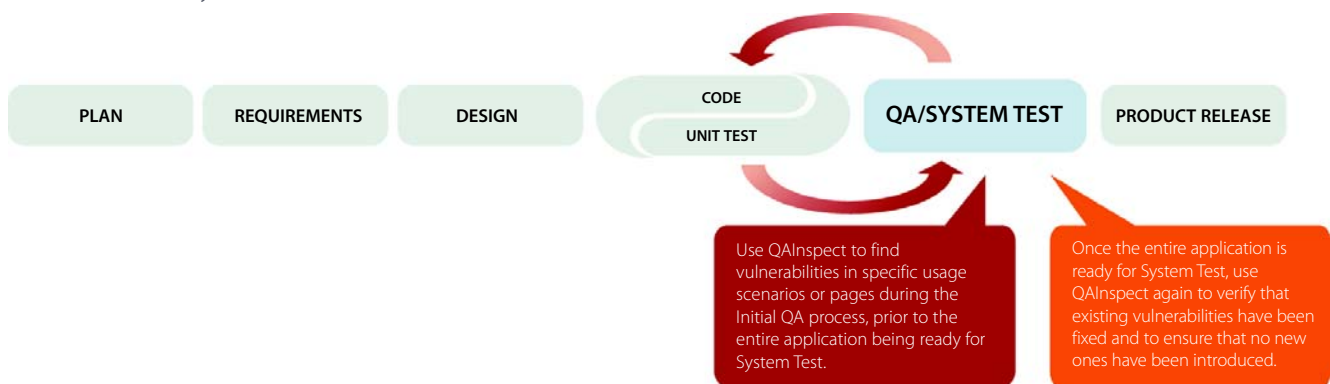
Security Assurance Throughout the Application Lifecycle

QAInspect - Comprehensive Security Test Management

QAInspect applies the most innovative techniques to identify security defects from the hacker's perspective. QAInspect reports on those vulnerabilities with detailed security knowledge in a way that Quality Assurance professionals can understand with a concise prioritized list of vulnerabilities and thorough vulnerability descriptions. Analysis results yield detailed information on the types of attacks possible, such as Cross-Site Scripting (XSS) or SQL Injection as well as on compliance issues related to regulations like SOX, HIPAA and PCI.

Security, a requirement in the testing process

Software Lifecycle



Tight integration with Mercury

QAInspect is tightly integrated with all Mercury functional testing products, allowing QA professionals to analyze Web applications within their existing testing framework.

- **Mercury Quality Center and TestDirector**

QAInspect Enterprise enables QA professionals to plan, configure and execute and manage automated Web application security testing from within the familiar Quality Center or TestDirector platforms. This allows QA professionals to easily leverage existing Quality Center and Test Director features for their security tests.

- **Mercury WinRunner and QuickTest Professional**

QAInspect Tester is the only security product today that provides users the ability to leverage existing functional test scripts to perform automated security analysis. QAInspect converts existing functional scripts and enables users to use these converted scripts into a security scan. Not only does this save time by eliminating the need to manually create security scripts, but QAInspect also reduces scan time and allows the user to focus on specific pages and process flows.

- **Mercury Business Process Testing**

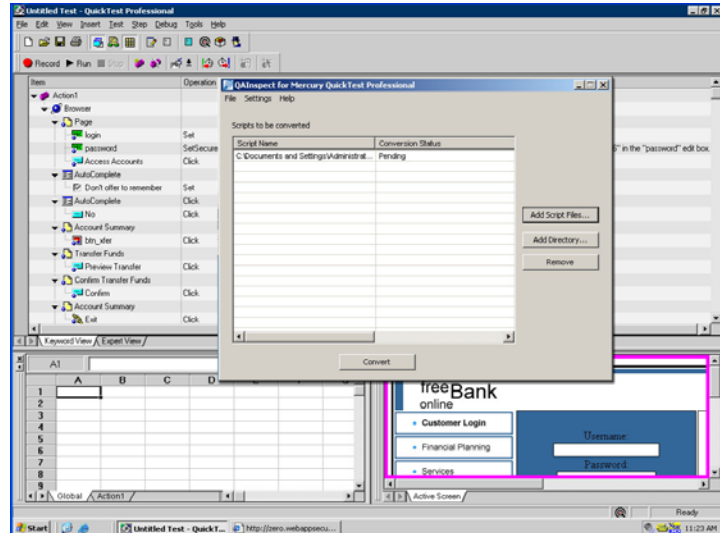
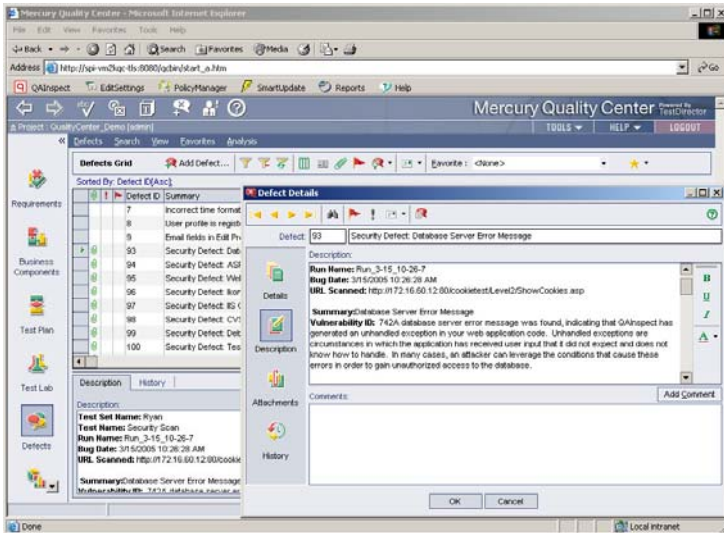
SPI Dynamics' Business Process Testing components enable QA professionals to quickly and easily add application security testing into their existing Test Plan. These pre-written components contain comprehensive automated security analysis. Now, the people who are most knowledgeable about the business process and the application functionality can quickly build comprehensive security tests without any security expertise. SPI Dynamics is the first and only company to provide a fully integrated BPT security accelerator for Mercury Quality Center.

QAInspect

Application Security for Quality Assurance

QAInspect Enterprise for Quality Center and TestDirector

QAInspect Tester for WinRunner and QuickTest Professional



QAInspect Enterprise finds and prioritizes the security vulnerabilities in an entire Web application during testing and presents detailed information and remediation advice about each vulnerability, all within the Mercury Quality Center and TestDirector environment.

QAInspect Tester finds and prioritizes the security vulnerabilities in specific usage scenarios or pages of Web applications during testing and presents detailed information and remediation advice about each vulnerability, all within the Mercury QuickTest Professional and WinRunner working environment.

Overall Benefits

Secure, high-quality software: By incorporating security testing into the overall test management process, you can manage functional, and security testing from a single platform. This allows you to deliver quality applications on schedule at the lowest possible cost.

Ease of use: Only QAInspect completely integrates with all Mercury's functional testing products to enable QA professionals to easily conduct and manage security testing in tandem with functional and performance testing.

Integrated defect reporting: Security defects are reported alongside functional defects in Mercury Quality Center and TestDirector Defect Management modules, allowing you to detect and eliminate security bugs during the development and QA phases of the application development lifecycle.

Concise prioritized vulnerabilities: All QAInspect products quickly find vulnerabilities and automatically prioritize them based on business risk.

Security expert knowledgebase: SPI Dynamics is recognized as the leading web application security company. Our security experts at SPI Labs find and capture all known security vulnerabilities and build that expertise directly into SecureBase, the leading knowledgebase of security vulnerabilities and best practices for fixing them. QAInspect's SmartUpdate feature automatically updates the product with the latest vulnerability checks from SPI Labs.

Comprehensive vulnerability reporting: All versions have comprehensive reports that provide detailed descriptions of security defects including: the potential business impact if the security defect is exploited, its possible severity, remediation information necessary to resolve the defect, and references for additional research.

Supports regulatory compliance efforts: Both products can be used to track and report progress on security compliance for laws, regulations and best practices like Sarbanes Oxley, HIPAA, PCI, OWASP and ISO 17799

QAInspect

Application Security for Quality Assurance

System Requirements

Client Requirements

(For All Versions)

- 512 MB of memory
- An active Internet connection
- Microsoft Windows 2000 with SP6a, XP with SP2 or Server 2003 with SP1
- 2 GB of free space preferred (150 MB required)
- Pentium 4, 1 GHz processor or higher
- Microsoft .NET 1.1



Mercury Interactive Corporation, awarded SPI Dynamics with its Technology Alliance Partner of the Year. The Partner of the Year Award recognizes the alliance partner that has developed and delivered the most innovative and highest impact technology integrations with Mercury solutions. SPI Dynamics was chosen as the Partner of the Year out of an active base of 45 partners in the Mercury Technology Alliance Program.

"The growing complexity of web application development and the increased focus on application security has created the need for an integrated security testing solution that spans the entire application lifecycle. Providing a platform to assist QA testing teams during the security defect removal process and before applications reach production, offers significant ROI for our organization."

Edward Liebig

Chief Information Security Officer
Manulife USA

About SPI Dynamics

SPI Dynamics' suite of Web application security products help organizations build and maintain secure Web applications, preventing attacks that would otherwise go undetected by today's traditional corporate Internet security measures. The company's products enable all phases of the software development lifecycle to collaborate in order to build, test and deploy secure Web applications. SPI Dynamics' internal research and development group, SPI Labs, is widely recognized as one of the leading authorities in Web application security. Founded in 2000 by security specialists, SPI Dynamics is privately held with headquarters in Atlanta, Georgia. For more information, visit www.spidynamics.com or call (678) 781-4800.



115 Perimeter Center Place, Suite 1100, Atlanta, GA 30346
Tel: 678.781.4800 | Fax: 678.781.4850 | Email: info@spidynamics.com

Copyright ©2005, SPI Dynamics Incorporated. All Rights Reserved.
QI-060906