

# WebInspect™

## The Next Generation in Web Application Scanning



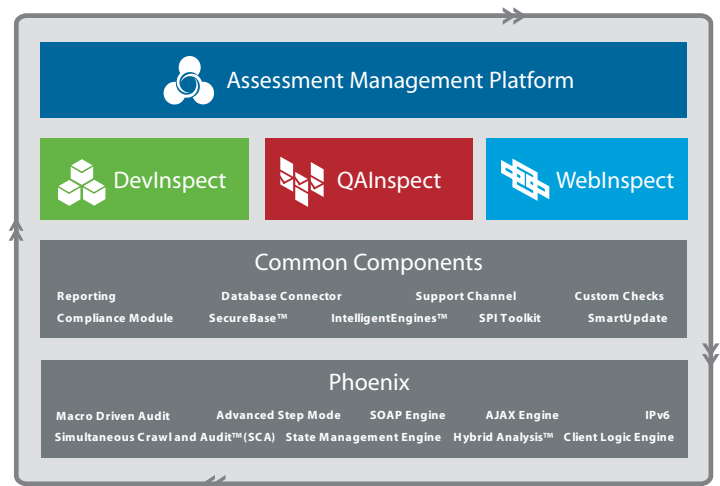
**WebInspect 7** is the first and only web application security assessment tool to be re-architected to thoroughly analyze today's complex web applications built on emerging Web 2.0 technologies. This new architecture delivers faster scanning capabilities, broader assessment coverage, and the most accurate results of any web application scanner available.

### The Next Generation in Application Scanning

WebInspect 7 is a fully re-architected version of our industry leading web application security assessment product, built on the SPI Dynamics Phoenix Scan Architecture. WebInspect 7 is the first and only solution to address the complexity of Web 2.0 and identify vulnerabilities that are undetectable by traditional scanners. In WebInspect 7 we tackle today's most complex web application technologies with breakthrough testing innovations, including simultaneous crawl and audit (SCA™) and concurrent application scanning, resulting in the industry's fastest and most accurate automated web application security testing tool.

### A Lifecycle Approach

SPI Dynamics delivers a comprehensive solution, which includes products and services that identify and remediate security vulnerabilities throughout the web application lifecycle. Our solution fosters collaboration among developers, QA testers and security professionals. This approach significantly reduces the risk and expense typically associated with discovering vulnerabilities in production. By identifying vulnerabilities before applications are released to production and ensuring that no new vulnerabilities are introduced throughout the life of the application, trustworthy software becomes a reality.



The new architecture, named Phoenix, has become the new foundation for our products. The Phoenix architecture combined with the Common Components provides a complete foundation that fully supports Web 2.0 and the future of web application security.



Start Secure. Stay Secure.™

Security Assurance Throughout the Application Lifecycle

# WebInspect - Overview

## Innovative Assessment Technology

- **Simultaneous Crawl and Audit (SCA)** - Produces faster scans, more accurate results by combining the application crawl and audit into a single fluid process
- **Broader Coverage, Reduced False Negatives** - Reduces false negatives using scan technology built specifically for today's complex applications
- **Run multiple Scans at the Same Time** - Increases testing throughput with support for multiple concurrent scans
- **Advanced Authentication Management** - Eliminates the complexities of authentication even with applications using advanced technologies such as two-factor authentication or CAPTCHAs
- **Support for IPv6** - Includes support for IPv6 enabled networks and hosts

## Sophisticated User Interface

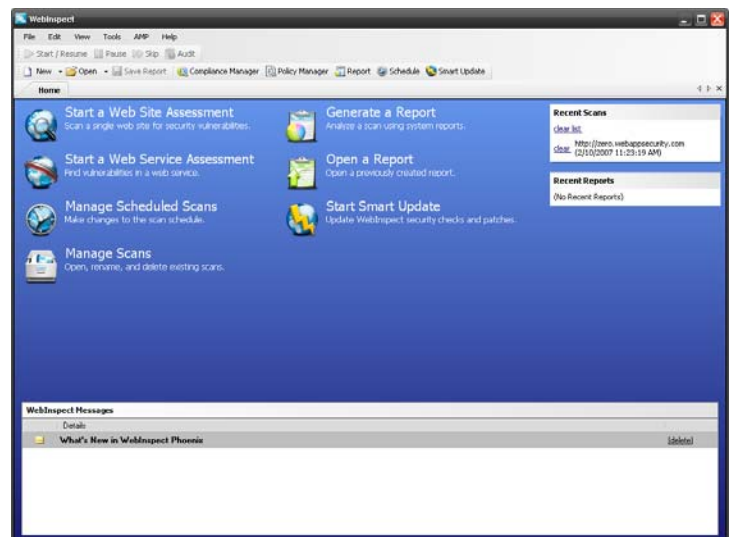
- **Immediate Results** - View scan results within seconds of starting assessment
- **Tabbed Interface** - Review and control multiple scans and reports.
- **SupportChannel™** - Submit false positive reports and other feedback directly to SPI Dynamics with just one-click
- **Interactive scans** - Interact with your scan using easy-to-use interface
- **Macro Creation** - Create macros to record testing steps and automate repeated testing
- **Custom Check Wizard** - Develop custom checks quickly and easily

## Detailed Reporting and Compliance

- **High-level management reports** - Show a snapshot of security posture
- **Detailed reports for development and quality assurance** - Customize reports for development and QA teams to address security defects
- **Comprehensive reports for compliance with all major regulatory standards** - Run compliance reports for PCI, SOX and HIPAA, using scan data
- **Trend analysis and security readiness reporting** - Watch application security trends

## Advanced Tools for Pen-Testers (SPI Toolkit)

- **SQL Injector** - Extract entire databases by using SQL Injection vulnerabilities
- **Cookie Cruncher** - Analyze the strength of cookies to avoid session hijacking
- **Encoder** - Translate different encryption and encoding standards
- **HTTP Editor** - Create and edit raw HTTP requests
- **Regex Editor** - Test and build regular expressions
- **SOAP Editor** - Generate and edit raw Web services requests
- **SPI Fuzzer** - Identify buffer overflows using HTTP fuzzing or modification of input variables
- **SPI Proxy** - View every request and server response while browsing a site
- **WebBrute** - Test the strength of login forms or web and proxy authentication systems
- **WebDiscovery** - Identify and discover which Web servers and Web applications are behind which ports



Through WebInspect's intuitive, wizard-driven interface, you designate which application or web service you want to analyze. You can also select which type of assessment to run and which security policy to use for each web application assessment.

## What We Check For

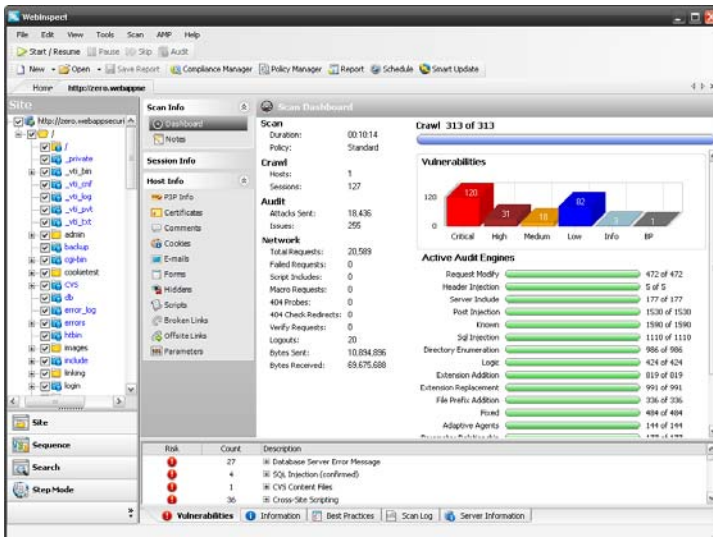
SPI Dynamics assessment technology is one of the most comprehensive and accurate on the market. WebInspect checks for all of the following vulnerabilities.

Parameter Injection	Proxy Support
Command Execution	Client Certificate Support
SQL Injection	State Management
Cross-Site Scripting	Directory Enumeration
Directory Traversal	Web Server Assessment
Abnormal Input	HTTP Compliance
Parameter Overflow	WebDAV Compliance
Buffer Overflow	SSL Strength
Parameter Addition	Certificate Analysis
Path Manipulation	Content Investigation
Path Truncation	Spam Gateway Detection
Character Encoding	Client-Side Pricing
MS-DOS 8.3 Short Filename	Sensitive Developer Comments
Character Stripping	WebServer/Web Package Identification
Site Search	Absolute Path Detection
Application Mapping	Error Message Identification
Crawl	Permissions Assessment
Automatic Form-Filling	Brute Force Authentication attacks
SSL Support	Known Attacks

## Minimum System Requirements

- 512 MB of RAM
- 250 MB of free disk space
- 1.5 GHz processor or better
- Microsoft .NET 2.0
- SQL Server Express 2005 SP1
- An active Internet connection (for updates)
- Windows XP Professional SP2, Windows Server 2003 Standard SP1
- Microsoft Internet Explorer 6.0 or Internet Explorer 7.0

# How WebInspect helps you



While WebInspect's scan is in progress you can watch and interact via the sophisticated client interface. You can stop the scan to investigate an issue or drill down into a specific area while the scan continues.

## Re-architected for Modern Applications

Most application scanners were designed for legacy web technologies and lack the intelligence required to scan emerging Web 2.0 applications that make use of AJAX, SOAP, JavaScript and Flash. WebInspect 7 is the first web application security assessment product to be re-architected to analyze today's web application technologies, including rich content sites that use two-factor authentication and other web advancements. This new architecture enables WebInspect 7 to see the entire application resulting in fewer false negatives than any other assessment product.

## Support for Legal and Regulatory Compliance

WebInspect includes detailed reports that show how your web applications should change to meet most regulatory standards. In addition, you can create new policies or customize an existing one with the Policy and Compliance Editor. Policies are currently included for more than 20 laws, regulations and best practices including:

- Sarbanes-Oxley
- California SB 1386
- Gramm-Leach-Bliley Act (GLBA)
- Health Insurance Portability and Accountability Act (HIPAA)
- ISO 17799
- VISA PCI Data Compliance
- OWASP Top 10

## Enterprise Integration

WebInspect integrates with SPI Dynamics' Assessment Management Platform™ (AMP) for enterprise-wide, distributed assessment capabilities. AMP provides a scalable organization-wide view of application security with centralized control over user permissions, security policies, and remote scanning administration.

## Comprehensive, Accurate and Fast

WebInspect includes several breakthrough innovations that make it the most accurate product available. Two of these are Simultaneous Crawl and Audit (SCA) and Intelligent Engines™. The Simultaneous Crawl and Audit combines the application crawl and audit phases into a single fluid process. The scan is refined based on real-time audit findings, resulting in a comprehensive view of the entire web applications attack surface.

*WebInspect is the most easy-to-use, extensible and accurate web application security assessment product available today. WebInspect enables both the security professional and the security novice to identify critical, high-risk security vulnerabilities in their web applications and web services.*

WebInspect also uses SPI Dynamics' Intelligent Engines which employ a structured logic-based approach to analyze the application then customize attacks based on the application's behavior and environment. WebInspect is unique in that it combines these sophisticated, ground-breaking assessment technologies with all of the industry's known web application vulnerabilities in SPI Dynamics vulnerability database, SecureBase.

Furthermore, users can now launch and manage multiple concurrent scans, greatly increasing testing throughput. This scanning technology combined with the new architecture for broader coverage of today's web applications results in the most accurate and fastest assessment possible.

## Easy-to-Use

WebInspect is easy to configure and use. It requires no server-side installations and can be used remotely for web application assessments. With WebInspect's wizard interface, users can easily run a fully automated web application assessment and manually interact with it throughout the assessment process. Advanced users can initiate scans through the command line interface.

## Extensible

WebInspect allows you to extend the product's capabilities to meet your organization's specific needs. You can configure WebInspect to adapt to any web application environment and use the custom check wizard to create custom attacks. The policy manager allows you to select and configure the exact attacks down to the check level.

## Sophisticated Reporting

WebInspect includes a variety of pre-configured reports such as, C-level trend reports, detailed developer focused reports and pass/fail compliance reports that demonstrate the state of your organization's security posture. WebInspect also allows you to edit any aspect of the report and add custom notes or details as needed. WebInspect report data can be exported in a number of standard formats like XML, HTML and PDF.

WebInspect is the most easy-to-use, extensible and accurate web application security assessment product available today. WebInspect enables both the security professional and the security novice to identify critical, high-risk security vulnerabilities in their web applications and web services.

# WebInspect

## Why WebInspect?

WebInspect 7 is a fully re-architected version of our industry leading web application security assessment product, built on Phoenix. WebInspect 7 is the first and only solution to address the complexity of Web 2.0 and identify vulnerabilities that are undetectable by traditional scanners. In WebInspect 7, we tackle today's most complex web application technologies with breakthrough testing innovations, including simultaneous crawl and audit (SCA) and concurrent application scanning, resulting in the industry's fastest and most accurate automated web application security testing tool.

### Key Benefits

- Dramatically reduces organizational risk by detecting vulnerabilities with the most comprehensive and sophisticated approach to Web application assessment on the market
- Significantly reduces penetration testing time and budget through a consolidated, automated approach
- Improves security professional's influence with specific pre-configured reports for management, development and quality assurance
- Supports legal and regulatory compliance with reports for all major laws and regulations
- Saves security professionals time by automatically keeping up with the latest known vulnerabilities and hacker techniques
- Supports complicated sites such as those using JavaScript, Flash, web services, SOAP or AJAX

"WebInspect 7 has leap-frogged traditional application scanning capabilities currently available. Our web sites can be very complex and can take considerable time to thoroughly assess. With WebInspect 7 one scan's duration dropped from eight hours to an impressive 45 minutes delivering a 91 percent increase in our assessment efficiency."

**Bill Geimer**

Program Manager  
USAID ISSO Team

### About SPI Dynamics

SPI Dynamics delivers a comprehensive suite of products and services that help to identify and remediate web application and web services security vulnerabilities found at key stages throughout the web Application Lifecycle. SPI Dynamics solutions enable security professionals, QA testers, and developers to work together to assess, analyze, and remediate web applications and web services for security vulnerabilities, and verify compliance with over 20 security policies like SOX, HIPAA and PCI. The Company's unique approach, utilizing patent-pending Intelligent Engines™ technology combined with the largest web application security vulnerability knowledgebase in the industry, delivers unparalleled speed and accuracy. SPI Dynamics' research and development team, SPI Labs, is widely recognized as one of the world's leading authorities on web application security and risk management. The Company counts over 950 customers among Global 2000 enterprises, including over 90 U.S. Federal accounts. SPI Dynamics' strategic partners include Microsoft, IBM, Hewlett-Packard, CSC and Visa. SPI Dynamics is privately held with headquarters in Atlanta, Georgia. For more information, visit [www.spidynamics.com](http://www.spidynamics.com) or call (866) 774-2700.



115 Perimeter Center Place, Suite 1100, Atlanta, GA 30346  
Tel: 1.866.774.2700 | Fax: 678.781.4850 | Email: [info@spidynamics.com](mailto:info@spidynamics.com)

Copyright ©2006, SPI Dynamics Incorporated. All Rights Reserved.

W70-021307